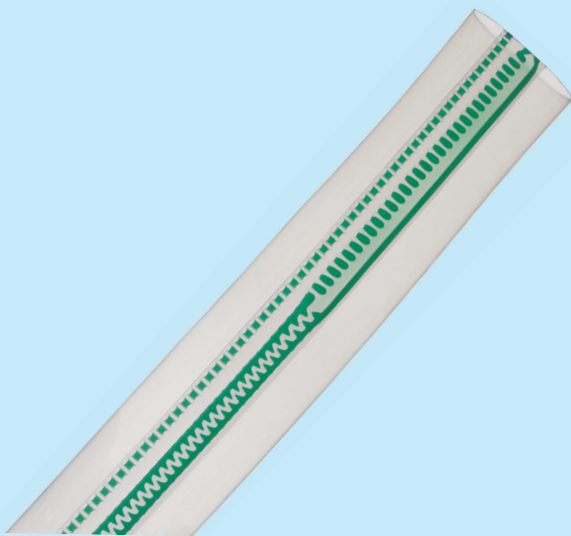




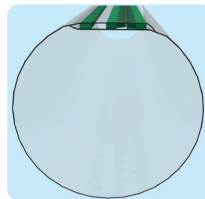
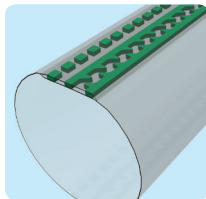
Chapin® Deluxe - Drip Tape

Premium Performance for Demanding Applications



Features & Benefits

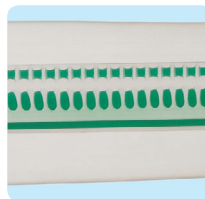
Precision Formed Drip Tape
Manufactured from unique extruded film profile with extra strength.



Resistance to Abrasion and Insect Damage

Rounded and thickened tape edges provides protection against abrasion and insect damage

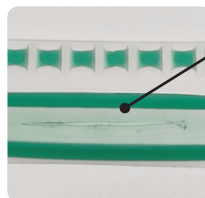
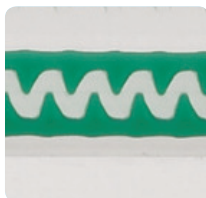
Continuous Inlet Filters
Continuous 333 inlet filters per meter length of the drip tape ensure supply of water to the flow path even if some of the filter segments of the stripe are blocked.



Double Inlet Filter Protection

Apart from the inlet filters, there are secondary filters at the inlet of each emitter.

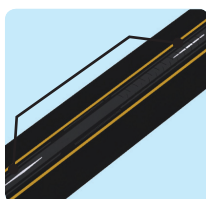
Clog Resistant Flow Path Design
Hydraulically efficient, high vortex, turbulent flow path with large cross sectional area.



Slit Outlet

Slit outlet prevents root intrusion and soil ingress.

Stringent Quality Check
Each batch is tested for stringent quality parameter. Conforming to international standard ISO 9261.



Freight Saver

Longer length of coil, higher volume per shipment, less space in warehouse, less handling costs.

Drip Tape

Chapin® Deluxe - Drip Tape

Applications

- Recommended for irrigation of closely spaced row crops like sugarcane, potato, cotton, banana, strawberry, lettuce, cabbage, tomatoes, chillies, pepper, melons, cucumber, floriculture, vegetables and spices.
- Recommended to use in greenhouses and nurseries.
- Suitable for surface as well as sub surface installations.

Operating Specifications

- Nominal operating pressure 0.7 kg/cm² for wall thickness up to 10 mil, 1.0 kg/cm² for wall thickness more than 10 mil.
- Recommended to use with specially designed Tape Lock™ fittings.
- Minimum 100 micron filtration recommended. Actual quality of filtration can be decided by quality of source water.
- Always keep the dripper in upright position to minimise blockage due to sedimentation and precipitation.
- For subsurface application, install vacuum breaker valves on the submain as well as on the collective drain to avoid soil suction during system shutdown.



Chapin® Deluxe - Drip Tape

Technical Specifications - Metric

Nominal Diameter (mm)	Spacing (cm)	Nominal Discharge at 10 psi	
		lph/100 mtr	lph/outlet
16	5	1116	0.57
	10	513, 744, 989, 1339	0.53, 0.76, 1.01, 1.36
	15	186, 223, 372, 484, 744, 989	0.28, 0.34, 0.57, 0.74, 1.13, 1.51
	20	298, 372, 484, 632, 1116	0.60, 0.76, 0.98, 1.29, 2.27
	30	186, 223, 298, 372, 484, 744	0.57, 0.68, 0.91, 1.13, 1.47, 2.27
	40	149, 186, 298, 372	0.60, 0.76, 1.21, 1.51
	45	372	1.70
	60	75, 149, 223, 372	0.80, 0.91, 1.36, 2.27

Technical Specifications - US

Nominal Diameter (inch)	Spacing (inch)	Nominal Discharge at 10 psi	
		gpm/100 ft	gph/outlet
5/8"	2	1.50	0.15
	4	0.69, 1.00, 1.33, 1.80	0.14, 0.20, 0.27, 0.36
	6	0.25, 0.30, 0.50, 0.65, 1.00, 1.33	0.08, 0.09, 0.15, 0.20, 0.30, 0.40
	8	0.40, 0.50, 0.65, 0.85, 1.50	0.16, 0.20, 0.26, 0.34, 0.60
	12	0.25, 0.30, 0.40, 0.50, 0.65, 1.00	0.15, 0.18, 0.24, 0.30, 0.39, 0.60
	16	0.20, 0.25, 0.40, 0.50	0.16, 0.20, 0.32, 0.40
	18	0.50	0.45
	24	0.10, 0.20, 0.30, 0.50	0.02, 0.24, 0.36, 0.60

Coil Length & Pressure rating

Nominal Diameter		Wall Thickness		Recommended operating pressure		Maximum Operating Pressure		Maximum Flush-ing Pressure		Coil Length	
(mm)	(inch)	(mm)	(mil)	(kg/cm ²)	(psi)	(kg/cm ²)	(psi)	(kg/cm ²)	(psi)	(meter)	(feet)
16	5/8"	0.15	6	0.70	10	1.0	14	1.0	14	2287	7500
		0.20	8	0.70	10	1.3	18	1.3	18	1982	6500
		0.25	10	0.70	10	1.6	23	1.6	23	1372	4500
		0.33	13	0.70	10	1.8	25	1.8	25	1067	3500
		0.38	15	0.70	10	2.5	35	2.5	35	915	4000
		0.51	20	0.70	10	2.8	40	2.8	40	915	3000
		0.13	05	0.60	8.5	1.0	14	1.0	14	2744	9000
		0.64	25	0.70	10	2.8	40	2.8	40	762	2500

Ordering Specifications

DLX	16	XX	XX	XXX	XXXX
	Nominal Dia. (16 mm)	Wall Thickness, mil	Hole Spacing, cm	Nominal Discharge, lph/m (SDR) x 100	Coil Length, m

Example : DLX1606204843049 This code refers to Chapin - Twin-Wall™ - Deluxe Drip Tape 16mm (5/8") nominal diameter, 6 mil (0.15mm) wall thickness, hole spacing 20cm (8") nominal discharge per meter of 4.84 lph (0.65 gpm/100 feet) and coil length of 3049m.

Chapin® Deluxe



Chapin - Deluxe Drip Tape for 16 mm ID at minimum operating pressure 0.7 kg/cm²

Dripper Spacing: 10 cm					
Emitter Flow Rates(lph)		0.53	0.76	1.01	1.36
	Slope, %	Length (m)			
10 % discharge variation	2	63.4	55.3	49.0	42.6
	1	80.4	66.4	56.8	48.0
	0	99.3	78.2	65.0	53.5
	-1	117.9	89.8	73.0	59.0
	-2	134.9	100.7	80.7	64.3
7.5 % discharge variation	2	52.3	46.5	41.7	36.7
	1	69.5	58.0	49.9	42.4
	0	89.8	70.7	58.8	48.4
	-1	110.1	83.4	67.5	54.4
	-2	128.5	95.2	75.9	60.2

Note: + slope : Uphill, - slope : Downhill

Dripper Spacing: 15 cm							
Emitter Flow Rates (lph)		0.28	0.34	0.57	0.74	1.13	1.51
	Slope, %	Length (m)					
10 % discharge variation	2	80.3	77.9	69.9	64.8	55.5	49.0
	1	126.2	116.7	94.2	83.3	66.7	57.0
	0	196.7	170.9	123.0	104.0	78.8	65.2
	-1	266.7	224.3	151.2	124.4	90.5	73.3
	-2	123.8	268.2	176.3	142.8	101.6	81.2
7.5 % discharge variation	2	62.7	61.3	56.7	53.2	46.6	41.8
	1	104.1	97.4	80.6	71.8	58.3	50.1
	0	177.9	154.5	111.2	94.1	71.2	59.1
	-1	253.8	212.6	142.1	116.3	84.0	67.9
	-2	78.9	85.2	168.9	136.2	96.0	76.4

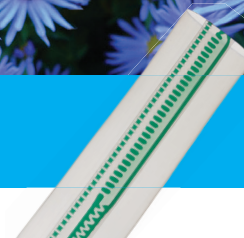
Note: + slope : Uphill, - slope : Downhill

Dripper Spacing: 20 cm						
Emitter Flow Rates(lph)		0.6	0.76	0.98	1.29	2.27
	Slope, %	Length (m)				
10 % discharge variation	2	74.0	69.8	65.0	59.0	46.4
	1	104.4	94.0	83.4	72.4	53.2
	0	142.8	122.6	104.2	87.0	60.2
	-1	180.6	150.8	124.6	101.4	67.2
	-2	213.0	175.6	143.2	114.8	73.8
7.5 % discharge variation	2	59.2	56.6	53.4	49.2	39.8
	1	88.2	80.4	71.8	63.0	46.8
	0	129.2	110.8	94.2	78.8	54.4
	-1	170.2	141.6	116.4	94.4	62.0
	-2	205.0	168.2	136.4	108.8	69.4

Note: + slope : Uphill, - slope : Downhill

Drip Tape

Maximum Running Length for Chapin® Deluxe



Chapin - Deluxe Drip Tape for 16 mm ID at minimum operating pressure 0.7 kg/cm²

Dripper Spacing: 30 cm							
Emitter Flow Rates(lph)		0.57	0.68	0.91	1.13	1.47	2.27
Slope, %		Length (m)					
10 % discharge variation	2	80.2	78.1	73.9	70.0	64.9	55.3
	1	124.9	117.1	103.9	94.6	83.2	66.7
	0	192.7	172.0	142.0	123.4	103.9	78.4
	-1	260.2	226.3	179.2	151.9	124.3	90.1
	-2	129.7	270.7	211.3	177.1	142.6	101.2
7.5% discharge variation	2	62.8	61.6	59.2	56.8	53.2	46.6
	1	103.3	97.9	88.0	80.8	71.8	58.3
	0	174.4	155.8	128.2	111.7	94.0	70.9
	-1	247.6	214.6	169.0	142.6	116.2	83.8
	-2	79.9	85.0	203.5	169.9	136.0	95.5

Note: + slope : Uphill, - slope : Downhill

Dripper Spacing: 41 cm					
Emitter Flow Rates(lph)		0.6	0.76	1.21	1.51
Slope, %		Length (m)			
10 % discharge variation	2	82.0	80.0	74.0	70.0
	1	134.4	124.8	104.0	94.4
	0	224.0	192.4	142.0	123.2
	-1	313.2	259.2	179.2	151.6
	-2	110.4	130.8	211.6	176.8
7.5 % discharge variation	2	63.6	62.4	59.2	56.8
	1	109.6	103.2	88.0	80.8
	0	202.4	174.0	128.4	111.6
	-1	299.2	246.4	169.2	142.4
	-2	76.4	80.0	203.6	169.6

Note: + slope : Uphill, - slope : Downhill

Dripper Spacing: 61 cm					
Emitter Flow Rates(lph)		0.8	0.91	1.36	2.27
Slope, %		Length (m)			
10 % discharge variation	2	82.8	82.2	78.0	70.2
	1	138.6	133.8	117.0	94.2
	0	241.2	222.6	171.0	123.0
	-1	344.4	310.8	225.0	151.2
	-2	106.8	111.0	268.8	176.4
7.5% discharge variation	2	64.2	63.6	61.2	56.4
	1	112.8	109.2	97.2	80.4
	0	218.4	201.0	154.8	111.0
	-1	330.0	297.0	213.0	141.6
	-2	75.6	76.8	85.8	168.6

Note: + slope : Uphill, - slope : Downhill