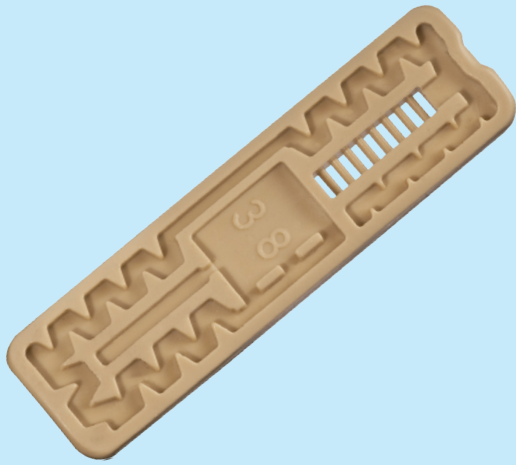


J-Turbo Aqura®

Efficient and Economical



Features & Benefits

Clog Resistant Design

Wide cross sectional area and precision inbuilt filter makes J-Turbo Aqura clog resistant.



Prevention of Sand Suction

Unique baffles at the outlet prevents entrance of sand particles inside the flow path.

Stringent Quality Checks

Each batch is tested for stringent quality parameter. Conforming to Indian standard IS 13488:2008 and international standard ISO 9261.

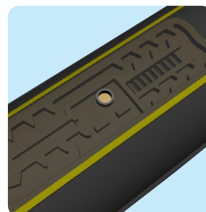
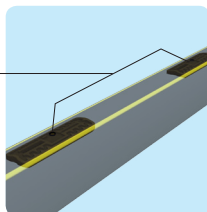


Marked With Two Parallel Yellow Stripes 'Twin-Line'

Symbol of quality. It also helps to ensure upright positioning of the dripper for better clog resistance.

Manufactured With Most Modern, State-of-the-art Equipment

It's computerised continuous online quality control monitors emitter spacing and precision in outlet drilling. Ensures reliable quality and consistent performance.

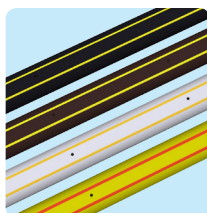


Laser Drilled Outlet Hole

Precision laser drilled outlet gives uniform and clear opening.

Flexibility in Color Selection

Black - for agriculture,
Brown - for landscape application,
White - for greenhouse application,
Purple - for reclaimed water application.



Available in Two Packaging Options

- Standard coil packing - J-Turbo Aqura®
- Freight saver option J-Turbo Aqura® Plus

Drip Line

J-Turbo Aqura®

Additional Features

Manufactured from special grade virgin plastic material

Makes the tubing durable and gives best environmental stress crack resistance (ESCR).

Excellent CV_m, manufacturer's coefficient of variation

Maintains close dimensional tolerances to ensure low CV_m and best field emission uniformity.

Quality Come First

Each batch is tested for stringent quality parameter. Conforming to Indian standard IS 13488:2008 and international standard ISO 9261:2004.

Twin Blue Line for Class 1 Tube

Special blue colored Twin Line tube is supplied.

Applications

- Jain Turbo Aqura® is recommended for irrigation of closely spaced row crops like sugarcane, cotton, banana, strawberry, vegetables, spices, biofuel crops, floriculture, etc.
- Recommended to use in greenhouses and nurseries.
- Suitable for landscape, shrubs and turf irrigation.
- Used for widely spaced horticultural plants like mango, citrus, guava, apple etc. in group spacings.
- Suitable for multi-seasonal applications.
- Suitable for surface as well as sub surface installations.

Specifications

- **Nominal Discharges** : 0.8, 1.3, 1.6, 2.4 and 4 lph at 1 kg/cm² pressure (0.21, 0.34, 0.42, 0.63 and 1.06 gph at 14.2 psi).
- **Sizes** : 12, 16, 17, 18, 19, 20, 23 and 25 mm nominal diameter as per metric standard. Also available in 5/8", 7/8", 9/8" and 1-3/8" nominal diameter as per US standard.
- **Emitter spacings** : Standard emitter spacing of 15, 20, 30, 40, 50, 60, 75, 90, 100, 120 and 150 cm. Other spacings and group spacings are available on demand.

Operating Specifications

- Nominal operating pressure 1 kg/cm². Can be used for other pressure ratings (lower/higher) after consulting company representative and with due care for filtration.
- Recommended to use specially designed emitting pipe fittings.
- Filtration recommendation 130 micron or less. Actual quality of filtration can be decided by quality of source water. Please refer to our "Maintenance Manual" for more details.
- For clog free performance always keep the dripper in upright position.
- For subsurface application, install vacuum breaker valves on the submain as well as on the collective drain to avoid soil suction during system shutdown.



J-Turbo Aqura®

Technical Specifications for Tubing - Metric

Nominal Inside Dia. mm	Inside Dia. mm	Minimum Wall Thickness (mm)			Standard Length, m	
		Class 1	Class 2	Class 3	Coil	Carton Spool
*12	10.5	0.4	0.6	0.8	100, 250, 400, 500	700
*16	14.2	0.5	0.7	1.0	100, 250, 300, 400	500
16	13.9	-	0.9	1.0	250, 400	500
17	15.3	-	-	0.9	250, 400	-
18	15.7	-	-	0.9	250, 400	-
**19	18.9	-	0.8	-	100, 250	-
*20	18.0	0.7	0.9	-	100, 250, 400	400, 250
23	20.8	-	0.9	-	100	-
*25	22.6	0.9	-	-	100	-

* Dimensions are as per Indian Standard IS 13488:2008.

** Dimensions as per Australian standard AS 2698.

Technical Specifications for Tubing - US

Nominal Dia. Inch	Inside Dia. Inch	Minimum Wall Thickness (mil)			Standard Length, feet	
		Class 1	Class 2	Class 3	Coil	Carton Spool
5/8	5/8	28	36	40	328, 820, 1640	2296
7/8	7/8	28	36	40	328, 820	-
9/8	9/8	36	40	-	328, 820	-
1-3/8	1-3/8	36	40	-	328, 820	-

* 1 mil = 1/1000th part of 1 inch = 0.0254 mm

Technical Specifications for Emitter - Metric

Emitter discharge lph @ (1kg/cm ²)	Emitter exponent x	Flow coefficient k	Coeff. of mfr. variation, CVm	Flow path dimensions (mm)			Inlet filter area (mm ²)
				Length	Width	Depth	
0.8	0.48	0.8	4	86.6	0.58	0.62	10.76
1.3	0.45	1.3	4.5	89.5	0.56	0.56	08.20
1.6	0.46	1.6	4.0	89.5	0.68	0.60	11.65
2.4	0.46	2.4	3.5	89.7	0.66	0.86	08.51
4.0	0.46	4	2	93.5	0.92	0.80	08.70

Flow equation $q = kH^x$, q = discharge, lph, H = Pressure head, kg/cm², x = Emitter exponent

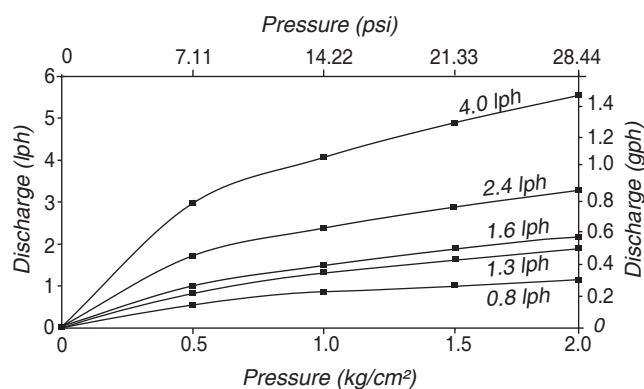
Technical Specifications for Emitter - US

Emitter discharge gph @ 15 (psi)	Emitter exponent x	Flow coefficient k	Coeff. of mfr. variation, CVm	Flow path dimensions (inch)			Inlet filter area (sq. inch)
				Length	Width	Depth	
0.21	0.48	0.059	4.0	3.39	0.023	0.024	0.016
0.35	0.45	0.104	4.5	3.50	0.022	0.022	0.013
0.43	0.46	0.125	4.0	3.50	0.027	0.023	0.018
0.65	0.46	0.187	3.5	3.51	0.026	0.034	0.013
1.08	0.46	0.312	2.0	1.70	0.036	0.031	0.013

Flow equation $q = kH^x$, q = Discharge, gph, H = Pressure head, psi, x = Emitter exponent

- Jain Irrigation Systems Ltd. are the owners of Trade Mark "Twin-Line®".
- Jain Irrigation Systems Ltd. has the statutory right to use the artistic work of two yellow or golden or red parallel stripes on a black tube, under the Copyright Act 1957, India.

Performance Graph- J-Turbo Aqura®



J-Turbo Aqura®

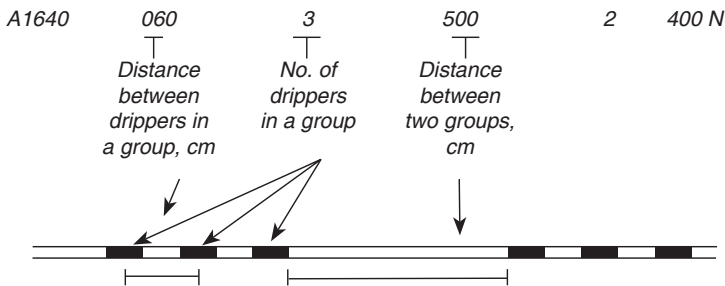
Ordering Specifications

A	X	XX	XX	XXX	X	XXX	N	X
		Nominal outside diameter			Pressure Rating Class for Indian Standard tubing			Color of the tube
	+ : Carton Spool Blank : Standard Coil	12-12mm 16-16mm 17-17mm 18-18mm 19-19mm 20-20mm 23-23mm 25 - 25mm 58-5/8" 98-9/8" 78-7/8" 138-1-3/8"	Discharge in lph x 10	Dripper Spacing in cm	For tubings other than Indian Standard- min. wall thickness x 10	Standard Coil Length in meter	N - Non pressure compensating	Blank - Standard Black with 'Twin Line' B - Brown (Landscape) W - White (Greenhouse) P - Purple (Reclaimed Water)

Example : A16400602400N - This code refers to J-Turbo Aqura® of 16mm nominal diameter having nominal discharge of 4 lph, emitter spaced at 60 cm, pressure rating class-2 and standard coil length of 400 m black colored tubing with 'Twin Line'

Note

- J-Turbo Aqura® is manufactured with ID control and declared OD are nominal. If you have specific ID or OD requirement, please mention while ordering.
- On request, J-Turbo Aqura® can be supplied in any other wall thickness and pressure ratings.
- J-Turbo Aqura® can be supplied in group spacing on request. Specify distance between drippers in the group, distance between two groups & no. of drippers in a group (minimum three drippers) as,



Maximum Running Length for J-Turbo Aqura®

Maximum Recommended Length (m), 12mm (10.5mm ID) at 1 kg/cm² inlet pressure

Dripper Spacing		15 cm	20 cm	30 cm	40 cm	50 cm	60 cm	75 cm	90 cm	100 cm
Slope, %		Length,m								
Discharge: 0.8 lph										
10 % discharge variation	2	41.8	48.6	59.4	66.8	72.5	77.4	82.5	86.4	88.0
	1	46.2	54.8	69.9	82.0	92.5	102.0	114.8	125.1	131.0
	0	50.5	61.2	81.0	98.8	115.0	130.8	154.5	176.4	190.0
	-1	54.7	67.4	92.1	114.8	137.0	159.0	193.5	226.8	249.0
	-2	58.9	73.6	102.6	130.0	157.0	184.2	227.3	269.1	297.0
7.5 % discharge variation	2	36.3	41.8	50.1	55.6	60.0	63.0	66.0	68.4	70.0
	1	40.9	48.4	61.2	71.6	80.0	87.6	97.5	105.3	109.0
	0	45.6	55.2	73.2	89.2	104.0	118.2	139.5	159.3	172.0
	-1	50.4	62.2	85.2	106.8	128.0	148.8	182.3	214.2	236.0
	-2	54.9	68.8	96.6	123.2	149.5	176.4	219.0	261.8	290.0
Discharge: 1.3 lph										
10 % discharge variation	2	32.2	37.8	47.4	54.4	60.5	65.4	72.0	76.5	79.0
	1	34.5	41.2	53.1	63.2	72.0	79.8	90.8	100.8	106.0
	0	36.7	44.6	59.1	72.0	84.0	95.4	112.5	127.8	138.0
	-1	39.1	48.0	65.1	80.4	95.5	110.4	133.5	155.7	170.0
	-2	41.4	51.2	70.8	88.8	107.0	124.8	153.0	180.0	198.0
7.5 % discharge variation	2	28.3	33.0	40.8	46.4	51.0	54.6	59.3	62.1	64.0
	1	30.7	36.6	47.1	55.6	63.0	69.6	78.8	86.4	91.0
	0	33.3	40.2	53.4	64.8	76.0	85.8	102.0	116.1	125.0
	-1	35.7	44.0	59.7	74.4	88.5	102.6	124.5	145.8	160.0
	-2	38.2	47.6	66.0	83.6	100.5	118.2	145.5	171.9	190.0
Discharge: 1.6 lph										
10 % discharge variation	2	29.1	34.4	43.2	50.4	56.0	61.2	67.5	72.9	75.0
	1	30.9	37.0	48.0	57.2	65.0	72.6	83.3	91.8	98.0
	0	32.8	39.8	52.8	64.0	74.5	84.6	100.5	114.3	123.0
	-1	34.6	42.4	57.3	70.8	84.0	97.2	117.0	135.9	149.0
	-2	36.4	45.0	61.8	77.6	93.0	108.6	132.8	155.7	172.0
7.5 % discharge variation	2	25.6	30.2	37.5	43.2	47.5	51.6	56.3	59.4	62.0
	1	27.6	33.0	42.6	50.4	57.5	63.6	72.0	79.2	84.0
	0	29.7	36.0	47.7	58.0	67.5	76.8	90.8	103.5	112.0
	-1	31.6	38.8	52.8	65.6	78.0	90.0	108.8	126.9	139.0
	-2	33.6	41.6	57.6	72.8	87.5	102.0	126.0	148.5	164.0
Discharge: 2.4 lph										
10 % discharge variation	2	22.7	26.8	34.2	40.4	45.5	49.8	56.3	61.2	64.0
	1	23.6	28.4	36.9	44.0	50.5	57.0	65.3	72.9	78.0
	0	24.6	29.8	39.6	48.0	56.0	63.6	75.0	85.5	93.0
	-1	25.6	31.4	42.3	52.0	61.5	70.8	84.8	98.1	107.0
	-2	26.7	32.8	45.0	56.0	66.5	77.4	93.8	109.8	121.0
7.5 % discharge variation	2	20.1	23.6	30.0	35.2	39.5	43.2	48.0	52.2	54.0
	1	21.2	25.4	33.0	39.2	45.0	49.8	57.8	63.9	68.0
	0	22.4	27.0	35.7	43.6	50.5	57.6	68.3	77.4	84.0
	-1	23.4	28.6	38.7	47.6	56.5	64.8	78.8	90.9	99.0
	-2	24.6	30.2	41.4	52.0	62.0	72.0	88.5	103.5	114.0

J-Turbo Aqura®

Dripper Spacing		15 cm	20 cm	30 cm	40 cm	50 cm	60 cm	75 cm	90 cm	100 cm
Slope, %		Length,m								
Discharge: 4.0 lph										
10 % discharge variation	2	16.7	19.8	25.5	30.4	34.5	38.4	44.3	48.6	51.0
	1	17.1	20.6	27.0	32.4	37.5	42.0	48.8	54.9	59.0
	0	17.7	21.4	28.2	34.4	40.0	45.6	54.0	61.2	66.0
	-1	18.2	22.2	29.7	36.4	43.0	49.2	58.5	67.5	74.0
	-2	18.8	23.0	30.9	38.4	45.5	52.8	63.8	73.8	81.0
7.5 % discharge variation	2	14.9	17.6	22.5	26.8	30.5	33.6	38.3	41.4	44.0
	1	15.5	18.4	24.0	28.8	33.5	37.2	43.5	48.6	52.0
	0	15.9	19.4	25.5	31.2	36.5	41.4	48.8	55.8	60.0
	-1	16.5	20.2	27.0	33.2	39.5	45.0	54.0	62.1	68.0
	-2	17.1	21.0	28.5	35.6	42.0	48.6	59.3	69.3	76.0

Note: +ve Slope : Uphill, -ve Slope : Downhill

Maximum Recommended Length (m), 16mm (14.2 mm ID) at 1 kg/cm² inlet pressure

Dripper Spacing		15 cm	20 cm	30 cm	40 cm	50 cm	60 cm	75 cm	90 cm	100 cm
Slope, %		Length,m								
Discharge: 0.8 lph										
10 % discharge variation	2	61.5	69.2	78.9	84.8	88.5	91.2	93.8	94.5	96.0
	1	73.3	86.0	105.6	120.8	133.0	142.8	153.0	162.0	167.0
	0	86.0	104.6	137.4	166.8	195.0	221.4	256.5	292.5	316.0
	-1	98.3	122.8	168.3	212.4	256.0	299.4	360.0	425.7	469.0
	-2	110.0	139.6	195.9	251.2	306.0	344.6	425.3	519.7	617.0
7.5 % discharge variation	2	51.9	57.4	63.9	67.6	70.0	71.4	72.8	73.8	74.0
	1	64.2	74.6	90.3	102.0	111.0	117.6	125.3	130.5	134.0
	0	77.7	94.6	124.2	151.2	176.0	199.8	232.5	264.6	286.0
	-1	91.2	114.4	157.8	200.4	242.5	285.0	344.3	407.7	451.0
	-2	103.8	132.6	187.5	242.0	297.0	350.6	417.0	495.5	585.0
Discharge: 1.3 lph										
10 % discharge variation	2	48.6	55.8	66.6	74.0	79.0	83.4	87.0	90.0	91.0
	1	54.7	65.0	81.6	94.8	106.5	116.4	127.5	137.7	144.0
	0	61.0	74.4	97.5	118.8	138.5	157.2	182.3	207.9	225.0
	-1	67.3	83.6	113.7	142.0	170.0	198.0	237.0	278.1	306.0
	-2	73.5	92.6	128.4	163.6	198.0	232.8	282.0	333.9	391.0
7.5 % discharge variation	2	41.8	47.6	55.5	60.8	64.0	66.6	69.0	71.1	72.0
	1	48.4	57.0	70.8	82.0	91.0	98.4	107.3	114.3	119.0
	0	55.2	67.2	88.2	107.2	125.5	142.2	165.0	188.1	203.0
	-1	62.1	77.4	105.6	132.8	159.5	186.6	224.3	263.7	291.0
	-2	68.7	87.0	121.8	156.0	190.0	223.8	265.0	315.6	375.0
Discharge: 1.6 lph										
10 % discharge variation	2	45.4	52.6	63.3	70.8	76.5	80.4	84.8	88.2	90.0
	1	50.7	60.4	75.9	88.8	100.0	109.8	120.8	131.4	137.0
	0	56.1	68.2	89.7	108.8	127.0	144.6	167.3	190.8	206.0
	-1	61.3	76.0	103.2	128.8	154.0	178.8	213.8	250.2	275.0
	-2	66.6	83.6	115.8	146.8	178.0	208.8	252.8	298.8	330.0
7.5 % discharge variation	2	39.3	45.0	53.1	58.4	62.5	64.8	67.5	69.3	71.0
	1	44.8	53.2	66.3	76.8	86.0	93.6	102.0	109.8	114.0
	0	50.7	61.8	81.0	98.4	115.0	130.8	151.5	172.8	187.0
	-1	56.5	70.2	95.7	120.0	144.0	168.0	201.8	236.7	261.0
	-2	62.1	78.4	109.5	139.6	170.0	200.4	243.0	299.9	345.0

Maximum Running Length for J-Turbo Aqura®

Dripper Spacing		15 cm	20 cm	30 cm	40 cm	50 cm	60 cm	75 cm	90 cm	100 cm
Slope, %		Length, m								
Discharge: 2.4 lph										
10 % discharge variation	2	36.0	42.2	51.9	59.6	65.5	70.2	75.8	80.1	83.0
	1	39.0	46.6	59.4	70.4	80.0	88.2	99.0	108.9	115.0
	0	42.0	51.2	67.2	81.6	95.0	108.0	125.3	143.1	155.0
	-1	45.0	55.6	74.7	92.8	110.5	127.8	151.5	177.3	194.0
	-2	48.0	59.8	81.9	103.6	124.5	145.8	175.5	207.0	228.0
7.5 % discharge variation	2	31.5	36.8	44.4	50.4	55.0	58.2	62.3	64.8	66.0
	1	34.6	41.4	52.5	61.6	69.5	76.2	84.8	92.7	97.0
	0	37.9	46.2	60.6	73.6	86.0	97.8	113.3	129.6	140.0
	-1	41.2	51.0	69.0	86.0	102.5	118.8	141.8	166.5	182.0
	-2	44.4	55.8	76.8	97.6	118.0	138.6	167.3	198.0	219.0
Discharge: 4.0 lph										
10 % discharge variation	2	27.0	32.0	40.2	46.8	52.5	57.6	63.0	68.4	71.0
	1	28.5	34.4	44.1	52.8	60.0	67.2	75.8	84.6	90.0
	0	30.1	36.6	48.0	58.4	68.0	77.4	90.0	102.6	111.0
	-1	31.6	39.0	51.9	64.4	76.0	87.6	103.5	119.7	131.0
	-2	33.1	41.2	55.8	70.0	83.5	97.2	116.3	135.9	150.0
7.5 % discharge variation	2	23.9	28.2	35.1	40.4	45.0	48.6	53.3	56.7	59.0
	1	25.5	30.6	39.3	46.4	53.0	58.8	66.8	73.8	78.0
	0	27.1	33.2	43.5	52.8	61.5	70.2	81.0	92.7	100.0
	-1	28.9	35.6	47.7	59.2	70.0	81.0	96.0	111.6	122.0
	-2	30.6	38.0	51.9	65.2	78.5	91.2	109.5	129.6	143.0

Note: +ve Slope : Uphill, -ve Slope : Downhill

Maximum Recommended Length (m), 20mm (18 mm ID) at 1 kg/cm² inlet pressure

Dripper Spacing		15 cm	20 cm	30 cm	40 cm	50 cm	60 cm	75 cm	90 cm	100 cm
Slope, %		Length, m								
Discharge: 0.8 lph										
10 % discharge variation	2	77.4	83.4	90.0	93.2	95.0	96.0	96.8	97.2	98.0
	1	102.3	116.6	137.7	152.4	162.5	169.8	177.0	182.7	185.0
	0	131.4	158.2	207.9	252.8	295.0	334.8	390.8	443.7	479.0
	-1	159.8	199.2	277.2	353.2	429.0	504.0	614.3	287.1	261.0
	-2	185.3	234.6	333.0	425.6	519.0	615.8	714.0	812.5	912.0
7.5 % discharge variation	2	63.0	66.8	70.5	72.4	73.5	73.8	74.3	74.7	75.0
	1	87.8	98.8	114.3	124.4	131.0	135.6	139.5	142.2	144.0
	0	118.8	143.2	188.1	228.8	266.5	303.0	353.3	401.4	433.0
	-1	149.9	187.8	263.1	337.6	411.5	486.0	593.5	710.9	837.0
	-2	177.2	225.6	327.7	428.6	535.0	648.0	787.3	952.9	1147.0
Discharge: 1.3 lph										
10 % discharge variation	2	65.7	72.8	82.2	87.2	90.5	92.4	94.5	95.4	96.0
	1	80.3	93.0	113.4	128.4	140.5	150.0	160.5	168.3	172.0
	0	95.9	115.4	151.5	184.4	215.0	244.2	285.0	323.1	349.0
	-1	111.2	137.6	189.3	239.6	289.0	338.4	410.3	482.4	532.0
	-2	125.4	157.8	222.0	285.2	361.0	459.0	582.0	732.0	915.0
7.5 % discharge variation	2	54.9	60.0	66.0	69.2	71.0	72.0	73.5	73.8	74.0
	1	69.9	80.2	96.3	107.6	116.5	122.4	129.8	134.1	137.0
	0	86.7	104.4	137.1	166.8	194.5	220.8	257.3	292.5	316.0
	-1	103.4	128.4	178.2	226.4	274.5	322.8	393.0	464.4	513.0
	-2	118.8	150.2	213.3	282.8	361.5	459.0	582.0	732.0	915.0

Maximum Running Length for J-Turbo Aqura®

		Discharge: 1.6 lph								
Dripper Spacing		15 cm	20 cm	30 cm	40 cm	50 cm	60 cm	75 cm	90 cm	100 cm
	Slope, %	Length,m								
10 % discharge variation	2	61.5	68.8	78.6	84.4	88.5	91.2	93.0	94.5	96.0
	1	73.3	85.2	105.0	120.0	132.0	141.6	153.0	161.1	166.0
	0	85.8	103.4	135.9	165.2	192.5	218.4	255.0	289.8	313.0
	-1	98.1	121.2	166.2	209.6	252.5	295.2	357.0	419.4	462.0
	-2	109.8	137.6	193.2	247.6	302.0	348.8	426.0	519.7	618.0
7.5 % discharge variation	2	51.7	57.0	63.9	67.6	69.5	71.4	72.8	72.9	74.0
	1	64.0	74.0	89.7	101.2	110.0	117.0	124.5	130.5	133.0
	0	77.6	93.6	122.7	149.2	174.0	198.0	230.3	261.9	283.0
	-1	91.1	113.0	156.0	197.6	239.0	280.8	341.3	402.3	444.0
	-2	103.7	130.8	184.8	238.4	298.0	361.2	432.0	518.5	618.0
		Discharge: 2.4 lph								
10 % discharge variation	2	50.4	57.4	68.1	75.2	80.5	84.6	88.5	90.9	92.0
	1	57.3	67.2	84.3	98.0	109.5	119.4	131.3	141.3	147.0
	0	64.2	77.4	101.7	123.6	144.0	163.8	191.3	216.9	234.0
	-1	71.2	87.6	119.1	149.2	178.5	207.6	249.8	292.5	321.0
	-2	78.0	97.2	135.0	172.0	208.5	245.4	298.5	355.7	414.0
7.5 % discharge variation	2	43.2	48.8	56.7	61.6	65.0	67.2	69.8	71.1	72.0
	1	50.5	59.0	73.2	84.4	93.5	100.8	109.5	117.0	121.0
	0	58.2	70.0	92.1	112.0	130.5	148.2	172.5	196.2	212.0
	-1	65.7	81.0	110.7	139.6	167.5	195.6	237.0	278.1	306.0
	-2	73.0	91.4	128.1	164.0	200.0	236.4	299.0	361.8	428.0
		Discharge: 4.0 lph								
10 % discharge variation	2	38.8	45.2	55.2	62.8	68.5	73.2	78.8	82.8	85.0
	1	42.4	50.2	63.9	75.2	85.5	94.2	105.8	115.2	121.0
	0	46.0	55.6	72.9	88.8	103.5	117.6	136.5	155.7	168.0
	-1	49.6	60.8	81.9	102.0	121.5	140.4	168.0	195.3	214.0
	-2	53.2	65.8	90.3	114.4	138.0	161.4	195.0	229.5	253.0
7.5 % discharge variation	2	33.9	39.0	47.1	52.8	57.0	60.6	63.8	66.6	68.0
	1	37.8	44.6	56.1	65.6	74.0	81.0	90.0	98.1	102.0
	0	41.7	50.2	66.0	80.0	93.5	106.2	123.8	140.4	152.0
	-1	45.6	56.0	75.6	94.4	113.0	131.4	157.5	183.6	202.0
	-2	49.5	61.4	84.9	108.0	131.0	153.6	186.8	220.5	244.0

Note: +ve Slope : Uphill, -ve Slope : Downhill

